

Ref No.: VA/21/1952/2020-21

Dated: 10-09-2021

**Schedule of Quantity/ Tender of Furnishing work of Baroda U.P. Bank  
Dighiya Branch Distt. & R.O. Prayagraj**

S.No.	Item's of work	Qty	Unit	Rate	Amount(Rs.)
1.	<b>Bank Low ht. Counter</b> 2'-6" wide made out of 19mm thick board with drawer unit and front side 12mm thick Etching Glass Supported with Teak wood or Aluminum member With 1.0 mm thick laminate on the top & Drawer unit shall be provided on one side while with space for CPU by its side pull out tray on slide shall be provided on each counter for keeping keyboard. all the exposed edges shall have 6 mm. TW lapping duly polished inside surface shall be enamel painted two coats over primer coats. It shall be locks & handles etc. provision for wire management shall be made. Complete work as per branch Manager/ Architect Satisfaction.	20.00	Rft		
2.	<b>P/F of Bank Cash counter</b> in partition two level cash counter 5'-0" long (with 3'-10" and 2'-6" height) counter for customer to be 1'-6" wide and counter to be 3'-0" wide with drawer unit made out of 19mm thick board with 1.0 mm thick laminate on top and front and other internal surface to be painted/polished complete as per item no.1	5.6	Rft		
3.	<b>P/F of Cash cabin partition</b> front-over the counter supported on 2"x1-1/2" sal wood frame work cover with 8.0 mm thk. Etching glass supported of 1"x 1/2" beading with book window in size 5"x6" center of the counter with 2"x2" spacing Aluminium grill will be fixed in front of partition Side partition supported 2"x1-1/2" sal wood well seasoned structure with a coat of antitermite treatment up to 3'-0" height framing of inside area with 2"x1-1/2" sal wood section 2'-0"c/c				

(2)

- horizontal and vertical with both side  
6mm thick ply & 1.0mm thick laminates  
both side. The upper portion up to 4'-0"  
height shall be of 2'-1/2"x2"x2'-1/2"  
Aluminum grill will be fixed complete  
with all accessories and labour. 118.00 sft
4. P/F of Low Ht.(4'-6" High) Partly glazed  
Laminated Portion in **Branch Manager/  
Advance dept. Cabin** the Under Framing  
shall be of 2"x2" sal wood ( Anti termite Treatment)  
for under framing at a max. distance 2'-0" in each  
direction. 6 mm th. Waterproof Ply shall be fixed on  
two side & 1.0mm thick laminated shall be pasted over  
its with chemical adhesive Provision shall be made  
molding melamine Polished shall be fixed Wherever  
necessary bottom 4" width shall have 5mm th.  
Plane glass 128.00
5. P/F of Low Ht.(4'-6" High) Laminated Portion  
for UPS Space the Under Framing shall be of  
2"x2" sal wood ( Anti termite Treatment) for under  
frame in at a max. distance 2'-0" in each direction.  
6 mm th. Waterproof Ply shall be fixed on two side &  
1.0mm thick laminated shall be pasted over its with  
Chemical adhesive 42.00 sft
6. P/F Low height partition/Wicket gate all  
specification as item No.4 . 12.00 sft
7. Providing and fixing in position double leaf  
powder coated **Aluminum** entrance door  
made of 14 guage thick sheet. All member  
shall be of 4"x1-3/4" section and bottom rail  
shall be of 5"x1-3/4" section with 6mm thick  
clear sheet glass including 4" dia 2 Nos. handles  
10" long 2 Nos, Tower bolts, floor spring 2 Nos.  
lock etc. complete. 102.00 sft
8. P/F of **Godrej Night latch.** 1.0 No
9. P/F of **Godrej mortice lock** 2.0 Nos
10. P/F of **Door closer** I.S.I mark 2.0 Nos.



(3)

11. Providing and fixing **Writing desk** in position box type Wooden writing in public space of approximate size 4'-0" x 2'-0" made out of 19mm thick good approved quality ply with 6" to 9" wide wide pigeon hole type compartments in the front facade boxing for keeping pay-in-ship, book literature etc. These Writing table's must have laminates 1.0 mm thick on top writing desk and two sides of the Boxes. With beading, lipping, molding and painting /polishing complete. 1.0 No.
12. Suggestion box 1.0 No.
13. Check Drop Box 1.0 No.
14. Providing and fixing Aluminum grill in cash cabin Grill Size 2-1/2"x2"x2-1/2" will be fixed complete with all accessories & labour. 40.0 sft
15. Providing and fixing in position **Notice boards** of approximate size 3'-0"x2'-0" and 6" deep made out of 19mm thick ply with fully glazed shutter in front and soft board with felt cloth lining at the back inclusive of good approved quality lock to this shutter, hinges, fixtures, handle etc. and front laminate /painted complete as directed by bank architect. 1.0 No.
16. Providing and placing in position **side units** made out of 19mm board with 1.0mm laminate with sliding hinged shutters (made out of 12mm thick ply with 1.0mm thick laminate on it) complete with handles etc. size 4'-0"x1'-6"x2'-6" 2.0 No.

(4)

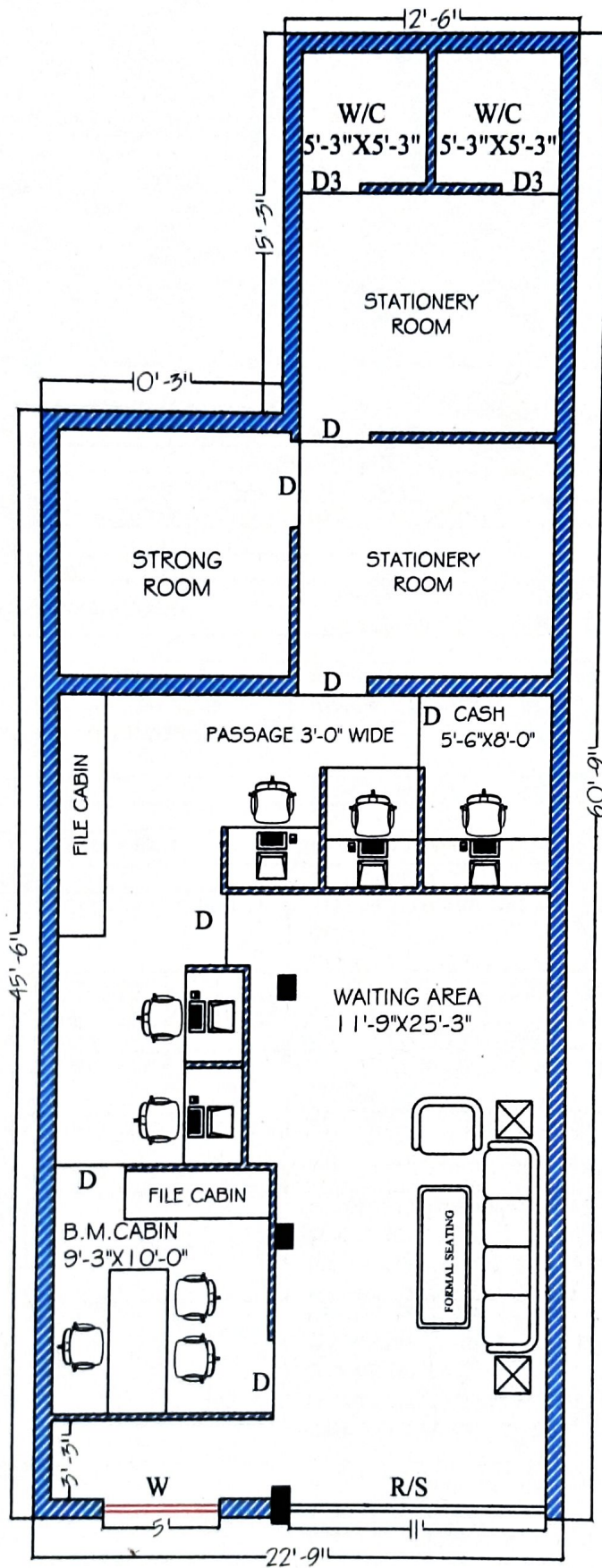
17. Providing and fixing **Column/Wall paneling** (8'-6" Height) paneling all specification as per item no.4. 104.00 sft
18. P/F in Position **Branch Manager Table** ( Size-6'-0" x3'-0" ) made out of 19mm th. water proof board with 1.0 mm th. Laminated on all exposed surface (others external surface shall be painted with two coats of enamel paint over one coat of primer) It shall have one unit on one side while provision to be made for pull out tray on slides. the table to be finished in TW/ HW lapping & godrej lock, handles, footrest, latches all complete. 1.0 No.
19. P/F in Position **Officer Table** ( Size-5'-0" x2'-6" ) made out of 19mm th. water proof board with 1.0 mm th. Laminated on all exposed surface (others external surface shall be painted with two coats of enamel paint over one coat of primer) It shall have one unit on one side while . 1.0 No.

( Rs. --- Lacs ---- Thousand --- Hundred --- Only.)

-----  
Total Rs.-----

For:- VISION ARCH





ROAD

PROPOSED PLAN FOR:-  
 BARODA U.P. BANK DIGHIYA, BRANCH  
 PRAYAGRAJ (R.O. PRAYAGRAJ)  
 DRW. TITLE :- GROUND FLOOR INTERIOR PLAN  
 PLAN (II)



Ar. RAJESH KUMAR  
 SINGH (B. Arch)  
 VISION ARCH Shi-15/160-1k,  
 Bharlai, Varanasi  
 M.No.9450165944  
 E.MAIL:- VARCH0036@GMAIL.COM

**PROJECT - SPECIFICATION FOR FURNITURE & ELECTRICAL WORKS.**  
**BANK - BARODA UP BANK**  
**BRANCH- DIGHIYA**  
**REGIONAL OFFICE- PRAYAGRAJ**  
**\*ALL WORKS TO BE DONE AS PER TENDER CONDITIONS.**

FURNITURE ITEMS	
LAMINATES (IS-2046) / VENEER	GREEN LAM / CENTURY / ARCHID / SAMRAT / FORMICA / SUNDEK OR APPROVED EQUIVALENT
COMMERCIAL PLY (IS-303) / WATERPROOF PLY (IS-710) / BLOCK BOARD (IS-1659) / FLUSH DOOR (IS- 2202)	ARCHID/ SAMRAT / CENTURY / EURO / GREEN OR APPROVED EQUIVALENT BY EIC.
ADHESIVES	FEVICOL / BLUECOAT/ VAMICOAL
LOCKS	GODREJ
MULTIPURPOSE GROUP LOCK	E-MPL1-22 / E-MPL1C-22 (EBCO)
NIGHT LATCH	8812 (GODREJ)
CYLINDRICAL LOCK (SS MATT FINISH)	3792-WITH KEY AND 3786-KEYLESS (GODREJ) / C120SS (EUROPA)
MORTISE DEAD LOCK (TWO WAY)	8815(GODREJ)
MORTISE LOCK WITH DOOR HANDLE	MATIZ 8083(GODREJ)
DRAWER CHANNELS	GODREJ/ HATTICH/ OZONE
TELESCOPIC CHANNELS (ZINK PLATED)	STDS35(I)35/ STDS25(I)35/ STDS50(I)35/ STDS60(I)35
BOTTOM CHANNELS (POWDER COATED)	BMDS 35/ BMDS 37/ BMDS 55/ BMDS 60 (EBCO)
GENERAL HARDWARE	SS MATT FINISH
DOOR STOPPER	I) BLACK/IVORY/BROWN/SILVER COLOR POWDER COATED DS1 (EBCO) II) SPRING TYPE BLACK/BROWN/IVORY COLOR POWDER COATED (FCGL'S STERLING)
HINGES	I) 3"/4"/5"/6" 1.8MM TH. SS MATT FINISH (SUZU) II) 75X12X19 1.2 MM TH. SS MATT FINISH FOR STORAGE (SUZU) III) AUTO CLOSE HINGES – SLIP ON HINGE- EURO / CLICK ON HINGE-I (EBCO) FOR STORAGE
HANDLES 'D' OR 'C' TYPE	1) 3"/4"/6"10MM DIA SS 202 MATT FINISH (ANJALI)
TOWER BOLT	3"/4"/6"/8" BRASS EXTRUDED SS MATT FINISH (OSWAL)



SLIDING CHANNEL	EBCO MAKE APPROVED BY ARCHITEC/BANK.
FLOOR SPRING	
60 KG	7477 (GODREJ) / M-74 (HARDWYN)
80 KG	8293 (GODREJ) / M-74 (HARDWYN)
100 KG	8294 (GODREJ) / M-76 (HARDWYN)
DOOR CLOSER	
60 KG	DOUBLE SPEED 8292-SILVER, 7325- GOLDEN (GODREJ) / SCORPIO (HARDWYN)
FIRE RATED 60 KG	1938 (GODREJ) / TRITON (HARDWYN)
PATCH FITTINGS FOR DOOR AND FIXED GLASS PARTITION (TOP/BOTTOM PATCH, PIVOT, PATCH LOCK, L ARM, L CONNECT, CONNECTOR, FLOOR SPRING, HANDLE, PLASTIC PROFILE)	GODREJ / XL C SERIES(DORMA) / OPF SERIES (OZONE) OR APPROVED EQUIVALENT
GLASS / MIRRORS	SAINT GOBAIN / MODI
ALUMINUM SECTION	JINDAL / INDAL / BANCO
WINDOW BLINDS	VISTA / AEROLUX/HUNTER DUGLUS / MAC
POLISH / PAINT	ASIAN PAINTS / BERGER / NEROLAC
PARTICLE BOARDS	NOVAPAN / DECO BOARD
COMPUTER ACCESSORIES	
CPU HANGER/ SHELF	SIDE MOUNTED IS CPU HL SM (INNOFITT) /CPUSM(EBCO) ,
CABLE MANAGER (60MM)	I) METAL - CO60ZN1(EBCO) II) PVC - CO 60 (EBCO) BLACK/IVORY/GREY COLOR
ACP PANEL	TIMEX / ALU DECOR / EURO OR APPROVED EQUIVALENT
WHITE FILM FOR GLASS	CRYSTAL / SONA MAKE VINYL FROSTED FILM
<b>PAINTS</b>	ICI, ASIAN,DULUX, BERGER, NEROLAC, JOHONSON & NICOLSAN
ANTI CORROSIVE PAINT	TIKITAR, FINCOAT
RED OXIDE	ASIAN, DULUX,NEROLAC
POLISH	ASIAN MELAMINE
EXTERIOR PAINTS	DULUX WEATHERSHIELD OR APP. EQUIVALENT
ENAMEL PAINT	ICI, DULUX, ASIAN, NEROLAC
<b>FALSE CEILING</b>	
GYPSUM BOARD	GYPROC (SAINT GOBAIN)
FRAMING WITH COMPLETE SYSTEM	GYP STEEL ULTRA (SAINT GOBAIN), RAMCO FUJI
HILUX BOARDS	RAMCO OR APPROVED EQUIVALENT
MINERAL FIBRE TILES CEILING WITH COMPLETE SYSTEM	ARMSTRONG/SAINT GOBAIN/USG
<b>APPROVE MAKE LIST FOR ELECTRICAL</b>	

PVC rigid conduits & Accessories:	1.5 mm thlck ( MMS ) ISI and FIA approved - Precision / Vraj / Nihir / BLP / PFI / Anchor / Polycab make. ( Only white coloured pipes FRLS type to be used. )
L.T. Cables:	Havells / KEI / Polycab / R. R. Kable / Finolex.
Wires (FRLS):	Havells / KEI / Polycab / R. R. Kable / Finolex.
Main Distribution Boards:	MDS Legrand (Lexic ) / Hager / Crabtree XPOA / Schneider ( Eazy 9 ) / L & T EXORA / C & S Wintrip / Siemens Bitaguard.
ELCB / RCCB / Miniature Circuit Breaker:	MDS Legrand (Lexic ) / Hager / Crabtree XPOA / Schneider ( Eazy 9 ) / L & T EXORA / C & S Wintrip / Siemens Bitaguard.
Switch gears:	MDS Legrand (Lexic ) / Hager / Crabtree XPOA / Schneider ( Eazy 9 ) / L & T EXORA / C & S Wintrip / Siemens Bitaguard.
Change Over Switch:	HPL Socomac / Havells / L & T / Hager.
Domestic fittings:	
a) All Switching Modular Accessories.	MK Wrapped Wround Plus / Schneider Livia / L & T entis / Crabtree Verona / Salzer Elite / Legrand Myris / C & S Divino / SSK Ace.
b) Holders / ceiling roses	Anchor or equivalent approved make.
c) Adhesive Tape	Bhor (Steel Grip) or approved .
10 - 30 A Polycarbonate Socket & Top:	MDS Legrand (Lexic ) / Hager / Crabtree XPOA / Schneider ( Eazy 9 ) / L & T EXORA / C & S Wintrip / Siemens Bitaguard.
Telephone Wires / Cable:	Finolex / R. R. Kable / Havells / L & T / Polycab.
Telephone tag block:	Krone make.
Cable Lugs:	Dowell / Lotus / Jainson / 3 D.
Cable gland Single / Double Compression:	HMI / Comet / 3D.
Ammeter / Voltmeter:	AE / HPL / MECO / Enercon make.
Selector switches:	L & T salzer / Kaycee make.
Indicator lamps:	LED type Teknic / Precifine / Binay.
Connector strips:	Wago / Elmex make.
Lighting Fixtures :	Wipro / Philips / GE / Crompton. only
Exhaust fan (Light duty):	Khaitan / Crompton / Havells.
Ceiling Fan ( 5 star rated ):	Crompton ( High Breeze Plus ) / Havells.
Wall mounted Fan ( 5 star rated ):	Crompton ( High Flow Wave ) / Havells.
Data Cable - I / O Unit:	D - Link / Digi Link.